

TS4

Benefits

- Compact body screening
- Maintains privacy
- Short scan time



Enhanced compact body scanning

Overview

The TS4 is the latest body scanning product to be released by ThruVision Systems and is an evolution of our first product the T4000. The TS4 delivers improved image quality, increased frame rate and has been developed to be easier to use.

Like all of ThruVision Systems' body scanning products the TS4 operates by receiving energy that is naturally emitted by all people and objects. The TS4 can be described as a 'passive' body scanner meaning it does not emit radiation onto the person in order to scan them.

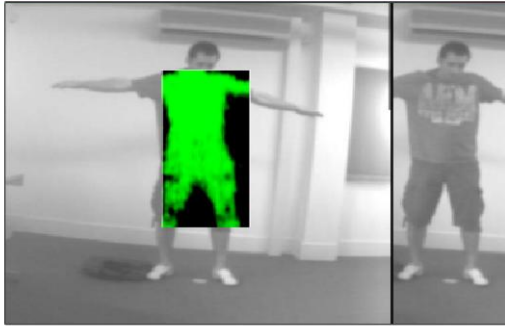
The TS4 is the perfect body scanning solution for facilities where security and privacy are both important as no intimate body information is captured or displayed by the TS4.

Applications

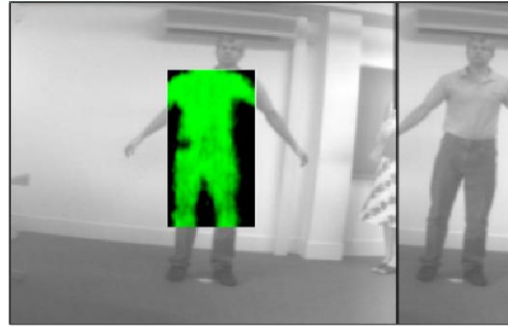
The TS4 is ideally suited for many checkpoint security applications including the protection of critical infrastructure, customs and immigration passenger screening, loss prevention and asset protection.

The TS4 is an ideal mobile body scanning solution as the compactness of the system and product accessories make it suitable for rapid deployment.

TS4 body scans



- In the above image the person was concealing multiple small items in his pockets.
- The TS4 operator is able to determine the general size, shape and location of each of the concealed items.
- Using their security training the operator would profile the individual and determine whether to ask to see the concealed items.
- The items were keys, mobile phone, some coins and a wallet.



- In the above image the person was concealing a 150 gram packet of simulated narcotics.
- The TS4 operator is able to determine the general size, shape and location of the concealment.
- The object is larger than an average wallet or mobile phone and is located in an unusual area.
- The operator would then ask the person to display the object so that it can be identified and evaluated.

Technical information

General

Weight: 24 kg (53 lbs)

Power consumption: 130 W

Operating voltage: 90 V AC - 264 V AC, 47/63 Hz

Mounting options: Ceiling and wall mounting, adaptor plate for industry standard pan/tilt

External connections: Mains AC and Ethernet

Dimensions: 556 mm (h) x 204 mm (w) x 656 mm (d) (21.8" x 8" x 25.8")

Specification

Maximum stand-off imaging distance: 15 m (49 ft)

Minimum stand-off imaging distance: 3 m (10 ft)

System operating temperature: 5°C to 45°C (41°F to 113°F)

Operational environment: Indoor, dry and air conditioned location

Accessories

Checkpoint kiosk, pan/tilt unit, mounting brackets, laptop

The information contained within this product information sheet is subject to change.